

Matching features 1

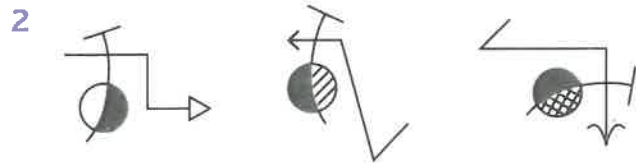
Have a go

For each set of pictures below, list four things in common within each set.



The features in common are:

- (a) _____
- (b) _____
- (c) _____
- (d) _____



The features in common are:

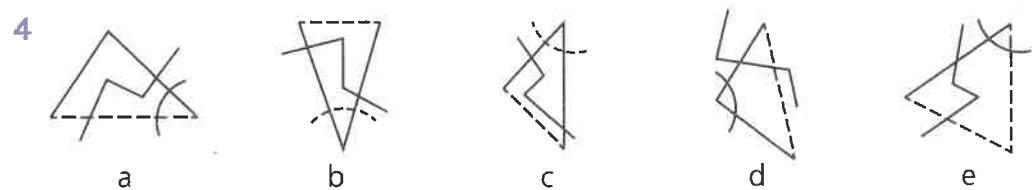
- (a) _____
- (b) _____
- (c) _____
- (d) _____



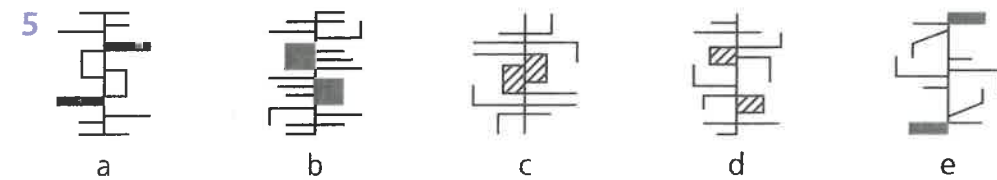
The features in common are:

- (a) _____
- (b) _____
- (c) _____
- (d) _____

In the pictures below, options a, b and c form a set. Options d and e do not belong to the set. Write the feature that means d does not belong to the set and the feature that means e does not belong to the set.

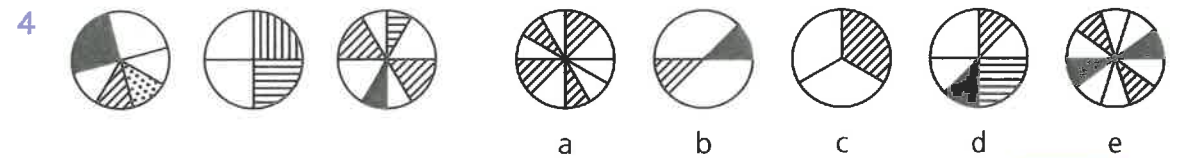
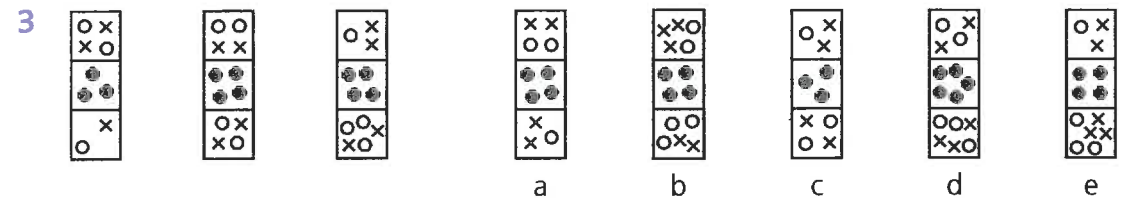
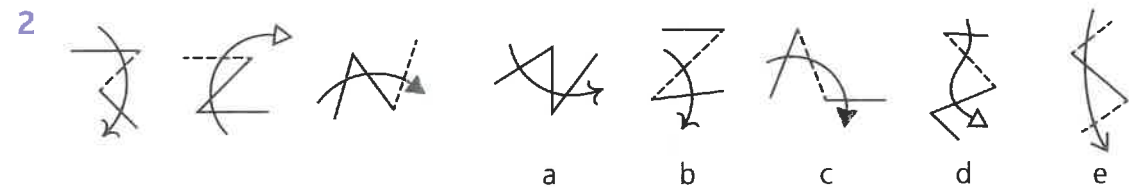
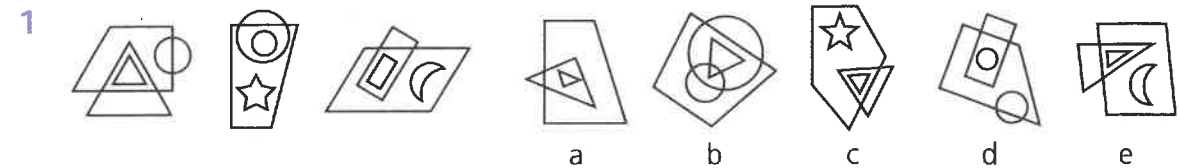


- _____
- _____



Test yourself

Look at the first three pictures and decide what they have in common. Then select the option from the five on the right that belongs to the same set. Circle the letter beneath the correct answer. For example:



Score / 4

Try it out

Draw your own shapes in boxes a, b and c so that two of your figures belong to the set on the left and one does not. Ask a friend or parent to identify the odd one out.

